



# New Port Facility Falkland Islands

## Statement of Competency for the Environmental Impact Assessment

Revision	Date	Description	Prep	Check	App
P01	16-Feb-2022	Statement of Competency for the Environmental Impact Assessment	SR	MS	MS

	Contract No:	Doc No:	Status	Revision
BAM	BAS.2051	BAS2051-RHD-ZZ-ZZ-FN-YE-5019	S4	P01
RHDHV	PB7829	PB7829-RHD-ZZ-ZZ-FN-YE-5019	S4	P01

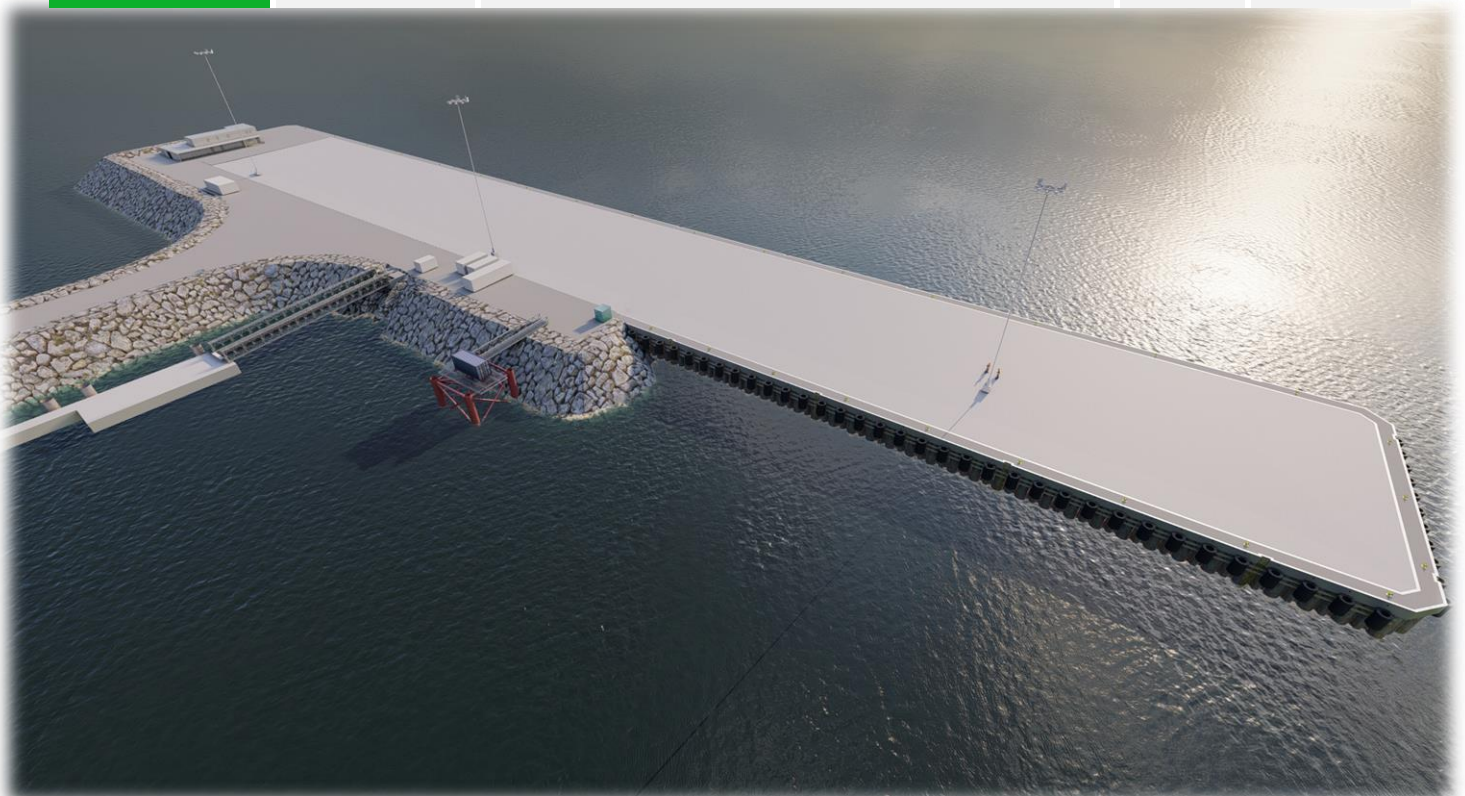


Table of Contents

**A1.0 Statement of Competency ..... 3**

A1.1 Introduction.....3

A1.2 Competent experts .....3

A1.2.1 Royal HaskoningDHV.....3

A1.2.2 SAERI .....4

## A1.0 Statement of Competency

### A1.1 Introduction

To ensure that the Environmental Impact Statement (EIS) is complete and undertaken to a high quality, BAM appointed Royal HaskoningDHV to undertake the Environmental Impact Assessment (EIA). This document provides information regarding the competency of the consultants who have undertaken the EIA and prepared the EIS on behalf of BAM.

### A1.2 Competent experts

#### A1.2.1 Royal HaskoningDHV

Royal HaskoningDHV is the leading environmental consultant in the UK concerned with achieving consent for port and terminal developments. In recent years, our team of skilled marine and terrestrial specialists have worked on and are working on EIAs for a number of high profile developments around the UK and internationally.

Royal HaskoningDHV has been repeatedly recognised with the Quality Mark by the Institute of Environmental Management and Assessment (IEMA) as being an organisation professionally capable of producing EIAs, demonstrating our commitment to excellence for our EIA activities.



Royal HaskoningDHV's team for the new port facility is comprised of a core of EIA professionals who managed the EIA process and co-ordinated preparation of the EIS. The core team was supported by a number of technical specialists who took responsibility for data analysis and technical impact assessment. The technical specialists who worked on the new port facility EIS are accredited by a range of relevant professional organisations, for example IEMA, the Chartered Institute of Ecology and Environmental Management (CIEEM), Chartered Institute of Water and Environmental Management (CIWEM), the Institute of Acoustics (MIOA), and the Chartered Institute of Environmental Health. Our technical specialists have experience of presenting at industry conferences, writing peer reviewed academic papers, taking the role of expert witness at Development Consent Order (DCO) Examinations, public inquiries and judicial reviews and are recognised as experts in their field.

Royal HaskoningDHV undertook the technical impact assessment and wrote the following impact assessment chapters of the EIS:

- Coastal processes
- Marine water and sediment quality
- Archaeology and cultural heritage
- Noise and vibration
- Air quality
- Traffic
- Landscape and visual

- Land quality
- Flood risk
- Navigation
- Socio-economics and local community
- Sustainability and climate
- Human health
- Accidents and disasters
- Impact inter-relationships

The assessment of impacts to marine ecology and coastal and terrestrial ecology was undertaken by a combination of Royal HaskoningDHV and SAERI. Further detail regarding SAERI's competency is provided below.

### **A1.2.2 SAERI**

SAERI (Falklands) Limited (SFL) is a wholly-owned trading subsidiary of the South Atlantic Environmental Research Institute (SAERI). SAERI is a charity registered in the UK with offices in the Falkland Islands and UK, supporting research in the United Kingdom South Atlantic Overseas Territories (UK SAOTs) and other Atlantic and Caribbean coastal communities from the tropics down to the ice in Antarctica. SAERI's Vision is to deliver world-class environmental research that informs the effective stewardship of our planet and a Mission to grow a sustainable environmental research institute in the Falkland Islands through partnership working to build capacity and inform the delivery of global environmental stewardship.

SFL is an integral part of the fulfilment of these organisational objectives aimed at bridging the gap between scientific research and its implementation throughout industry and commerce to make better, more informed decisions about how we act and interact with our environment in order to provide a sustainable future for generations to come. SFL offers industry a suite of skills delivered through a team of subject-matter experts with deep-seated knowledge of the South Atlantic territories, island environments and excellent track records for delivering above and beyond the project requirements, within budget and on time. SFL has undertaken a number of projects covering Environmental Baseline descriptions and EIA for diverse industries, Remote Sensing and Habitat Mapping using state-of-the-art technologies, Ecosystem Services Assessments and a wide array of fisheries consultancy providing fit-for-purpose analysis, protocols, and data services.