

# THE WOOL PRESS

January/ February 2019

Volume 315

Telephone +500 27355

Fax +500 27352

biosecurity2@doa.gov.fk

## In this issue...

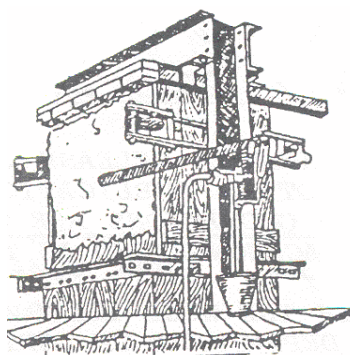
### *Editorial*

*West Falkland Ram and Fleece Show Report and Prize List*

*Detector Dog Teams Back in the Islands*

*Use of Gibberellic Acid on Pastures in the Falkland Islands*

*Saladero News*



*Edited By Rhiannon Didlick-Smith*

*Printed by The Print Shop, Stanley*

*Produced by the Department of Agriculture, Falkland Islands Government*

# EDITORIAL

As I write this editorial at the beginning of February – summer at last appears to have arrived. The temperature today is above 20°C and the forecast is for that to continue for the rest of this week; following on from a rather unsettled January with some good spells of rain that should encourage some reasonable pasture growth. If you want to improve your pasture even more then have a read of James' article on gibberellic acid on pages 8 and 9. It would appear that the main benefit of its use in the Falkland Islands would be to increase pasture growth going into and coming out of winter. Having read the article, if you have any questions I am sure that James would be only too happy to elaborate further on the subject.

There is a comprehensive write up of the 32<sup>nd</sup> West Falkland Ram and Fleece Show on pages 4 to 6. This took place on the 29<sup>th</sup> Dec 2018 in Fox Bay and appears to have been a very successful and enjoyable event both for the competitors and for those just attending to see what it is all about.

You'll note that the detector dogs are coming back to the Islands this month. In fact, they should have been here already but having made the journey from Virginia to Miami for the flight to Santiago the flight to South America was cancelled and the earliest they could get here was the middle of February. Hopefully they will still be able to carry out some useful work after their arrival.

Mandy brings you up to date with all that has been happening at Saladero over the past couple of months. As she mentions in her article the identification of lambs and linking them to their mothers has become a very scientific process – DNA testing is now a feature of lamb identification in the national stud flock. Like her I wish Tracy a speedy recovery from her operation in Punta Arenas.

Finally I draw your attention to the dates of this year's Sports' Week at Goose Green - 2nd to 5th March and at Port Howard 3rd to 6th March and the National Stud Flock ram sale at Saladero on March 16<sup>th</sup>. You can find the proposed programmes on pages 12, 13 and 16 respectively.

Here's hoping for a good second half of the summer.

**Steve Pointing**  
**Senior Veterinary Advisor**

The Department of Agriculture (DoA) release all copyrights on content to The Wool Press.  
Other publications are invited to quote freely.

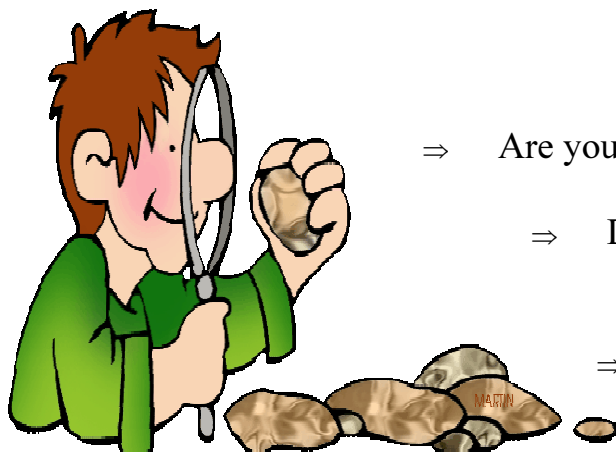
However, such quotations are to be made in context and the Wool Press must be acknowledged as the source.

**The articles printed in the Wool Press do not necessarily represent the views of the DoA.**

© Crown Copyright 2019

## Soil Testing 2019

We will soon be starting our soil testing programme for the Autumn



⇒ Do You need paddocks tested?

⇒ Are you thinking about pasture renovation?

⇒ Do you have hayfields that could do with a dressing?

⇒ Are you planning or thinking of oats or swedes?

If so, get in touch with James at the Ag Dept.

[jbryan@doa.gov.fk](mailto:jbryan@doa.gov.fk)

## DOG DOSING DATES FOR 2019/20

Date	Drug
Wednesday 9 <sup>th</sup> January 2019	Drontal
Wednesday 13 <sup>th</sup> February 2019	Droncit
Wednesday 20 <sup>th</sup> March 2019	Droncit
Wednesday 24 <sup>th</sup> April 2019	Droncit
Wednesday 29 <sup>th</sup> May 2019	Droncit
Wednesday 3 <sup>rd</sup> July 2019	Drontal
Wednesday 7 <sup>th</sup> August 2019	Droncit
Wednesday 11 <sup>th</sup> September 2019	Droncit
Wednesday 16 <sup>th</sup> October 2019	Droncit
Wednesday 20 <sup>th</sup> November 2019	Droncit
Wednesday 18 <sup>th</sup> December 2019	Droncit
Wednesday 9 <sup>th</sup> January 2020	Drontal



### NOTICE

To reduce our environmental footprint, the Wool Press is now printed in this smaller size.

The Wool Press can also be accessed online via the DoA Website & the DoA Facebook page.

*Regular weighing - it is important to keep a check on dog's weights to ensure correct dosage is being given.*

All dog owners are responsible for worming their own pets. Please remember to contact the Veterinary Office and confirm this has been done. After normal working hours, please leave a message or email.

### The Falkland Islands Government

Department of Agriculture,

Veterinary Service,

Tel: (500) 27366 Facsimile: (500) 27352

E-mail: [sbowles@doa.gov.fk](mailto:sbowles@doa.gov.fk)



## **The Thirty-Second West Falkland Ram & Fleece Show, 2018 Report**

Saturday 29<sup>th</sup> December 2018 dawned under a clear blue sky and very little wind on West Falkland. This glorious daybreak provided even more encouragement to the residents and visitors to Fox Bay Village, who were anticipating 'a good day' out and were not to be disappointed.

Keith Knight had worked hard in transforming the Woolshed prior to the event. That morning Keith, ably assisted by Lisa Pole-Evans and Harold Neilson, were there to take entries. Some of the fleeces had already arrived by FIGAS, but the majority of fleeces and all the rams were delivered on the day. As usual they started as a trickle but it soon became quite hectic as the deadline for entries approached.

Once the entries were all in, Susie Hansen assisted by Lisa Pole-Evans, set about the daunting and onerous task of selecting the fleeces which had the highest estimated commercial value. On completion of this, the next task was to select the Champion Ram and Reserve Champion from all the rams that were entered in the three Ram classes.

A total of sixty-four fleeces from eleven farms and forty-eight rams from eleven different farms were exhibited at this year's 'event'. All the entries had been carefully selected from tens of thousands of fleeces and hundreds of rams. Each fleece and ram on show was a credit to its owner.

By now the barbecue was in full swing. It had been set up by Justin Knight and Chris Lloyd using gas fired barbeque pits. In addition to the usual fare Nuala had made mulled wine and cooked mince pies. This fortified all those that intended judging the three classes of rams and the three classes of fleeces as well as the additional competitions, including the new Pet Lamb class, which awaited them in the sheep holding areas of the Woolshed.

After all the judging slips had all been handed in, the time-consuming job of counting up the judging slips took place. The sheep used in the fleece weight competition was then skilfully shorn of its fleece by Critta Lee and both the fleece and the sheep were weighed. The corresponding 'Fleece Weight', 'Sheep Weight' and 'Micron Guess' competitions produced some very accurate results.

Duane Evans judged the three sheep in the 'Under 21's' competition so that they could be compared to the other entrants results and enable the winning entries to be selected.

Promptly at 5.00 pm a good crowd assembled in the Woolshed for the Prize giving. This year's prizes were presented by H.E. the Acting Governor, Alex Mitham, who had flown to Fox Bay especially for the event.

As usual there were some excellent trophies and cash prizes for the winning entries. Special mention must go to our various sponsors, most of whom have generously and loyally supported the 'Ram & Fleece Show' for many years.

The prize-giving brought this year's Show to a close, after which the focus of attention moved back to the Social Club for more socialising until late that night. The Southern Cross Social Club committee did an excellent job of quenching the thirst of the visitors at the bar. This ended another successful Ram and Fleece Show.

**Keith and Nuala Knight - Organisers WFR&FS.2018**

## The Thirty-Second West Falkland Ram & Fleece Show 2018 Prize List

PRIZE	DONATED BY	WON BY	POINTS
<b>Class 1: Full Wool Ram Hogget</b>			
1 <sup>st</sup>	Engraved Challenge Shield donated by Mr & Mrs Austin Davies + £150 donated by Byron Holdings.	Westley	72
2 <sup>nd</sup>	£100 donated by Byron Holdings	Westley	70
3 <sup>rd</sup>	£75 donated by Byron Holdings	Port Howard	61
4 <sup>th</sup>	£50 donated by SAAS	Shallow Harbour	61
<b>Class 2: Full Wool Dual Purpose Ram</b>			
1 <sup>st</sup>	Lyn Blake Perpetual Challenge Cup + £200 donated by FIMCo Ltd	Doyle	86
2 <sup>nd</sup>	£150 donated by FIMCo Ltd	Coast Ridge	80
3 <sup>rd</sup>	£100 donated by FIMCo Ltd	HARPS	72
4 <sup>th</sup>	£50 donated by FIMCo Ltd	Spring Point	64
<b>Class 3: Full Wool Mature Ram</b>			
1 <sup>st</sup>	Falkland Islands Wool Marketing Challenge Cup & Replica donated by the Falkland Islands Wool Company.	Shallow Harbour	68
2 <sup>nd</sup>	£100 donated by the Falkland Islands Wool Company Ltd	Coast Ridge	59
3 <sup>rd</sup>	£60 donated by the Falkland Islands Wool Company Ltd	Spring Point	52
4 <sup>th</sup>	£40 donated by the Falkland Islands Wool Company Ltd	Green Hill	40
<b>Class 4: Hogget Fleece</b>			
1 <sup>st</sup>	Silver Challenge Cup & Replica donated by Mr RA Edwards & RBC Ltd + £50 donated by RB Consultants.	Mount Kent	108
2 <sup>nd</sup>	£75 donated by Argos Group	Mount Kent	87
3 <sup>rd</sup>	£50 donated by Port Howard Farm	NSF	54
4 <sup>th</sup>	£25 donated by Argos Group	Shallow Harbour	52
<b>Class 5: Any Fine Wool Fleece Other Than Hogget</b>			
1 <sup>st</sup>	'Governor's Cup' Challenge Cup donated by H.E the Governor & Replica + Return Ferry Trip (Vehicle + 2 People) donated by Workboat Services	Main Point	96
2 <sup>nd</sup>	£100 donated by Falkland Landholdings	Mount Kent	71
3 <sup>rd</sup>	£75 donated by Mount Kent Farm	Coast Ridge	63
4 <sup>th</sup>	£50 donated by the RBA	Coast Ridge	50
<b>Class 6: Any AAAF Type Fleece</b>			
1 <sup>st</sup>	Shirley Knight Perpetual Challenge Cup donated by Coast Ridge Farm & Replica donated by Leicester Creek Farm	Mount Kent	103
2 <sup>nd</sup>	£75 Fuel Voucher donated by Stanley Services	HARPS	72
3 <sup>rd</sup>	£50 donated by Mount Kent Farm	Mount Kent	72
4 <sup>th</sup>	£25 donated by Mount Kent Farm	Coast Ridge	67

## The Thirty-Second West Falkland Ram & Fleece Show 2018 Prize List (Additional Prizes)

<b>Additional Prizes</b>
The <b>Champion Ram</b> owned by Shallow Harbour won the Patricia Luxton Perpetual Challenge Cup & Replica donated by the Luxton family, Chartres + £100 donated by SAAS.
The <b>Reserve Champion</b> owned by Shallow Harbour won £50 donated by Southern Imports.
<b>Fleece with the Highest Commercial Value</b> (all prizes donated by the Falkland Islands Development Corporation. <b>1<sup>st</sup> Place:</b> NSF (gross estimated value of £55) won a Silver Challenge Cup + £75 <b>2<sup>nd</sup> Place:</b> Mt Kent (gross estimated value of £45.01) won £60 <b>3<sup>rd</sup> Place:</b> NSF (gross estimated value of £43.65) won £40 <b>4<sup>th</sup> Place:</b> Main Point (gross estimated value of £43.33) won £25
Winner of the <b>Pet Sheep Class</b> was Spike owned by the Lee Family who won £25 donated by Port Howard Farm
<b>Farm with the most points in all classes</b> was Mount Kent Farm who won 'The Owen and Veronica Summers Memorial Challenge Cup' & Replica donated by Mr Colin Summers.
Rosettes donated by Mr Jim McAdam were presented for 1 <sup>st</sup> , 2 <sup>nd</sup> , 3 <sup>rd</sup> and 4 <sup>th</sup> place winners in all 6 Classes and for the Champion Ram and Reserve Champion.
<b>Additional Competitions</b>
<b>Guess the Sheep Weight competition</b> was won by Hugues Deligniers with the closest guess of 40.5kg (actual weight: 40.6kg). Prize was £25 donated by Mr RA Edwards.
<b>Guess the Fleece Weight competition</b> was won by Josie McKay with the correct guess of 3.4kg (actual weight: 3.4kg). Prize was £50 donated by Falkland Farmers.
<b>Micron Estimate competition</b> was won by Bill Pole-Evans with the correct guess of 18.6u (actual micron: 18.6u). Prize was £50 donated by Falkland Farmers.
<b>Sheep Judging Competition for Under 21's</b> (all prizes donated by the Department of Agriculture) <b>1<sup>st</sup> Place:</b> Jake Hawksworth and Gabi Hartley won a £50 voucher <b>2<sup>nd</sup> Place:</b> Daisy McKay won a £20 voucher <b>3<sup>rd</sup> Place:</b> Jessica Lee won a £10 voucher
<b>Additional Credits</b>
F.I.G.A.S who once again generously agreed to fly fleeces to the Show free of charge and arranged flights on that day which were piloted by Captain Drew Robertson.
The Southern Cross Social Club and F.I Tours and Travel who financed the barbecue, which also had meat supplied by Rincon Ridge and Coast Ridge farms and was cooked by Justin Knight, Chris Lloyd and Kenneth McKay.
Keith and Nuala Knight who transformed the Woolshed, then took entries with Harold Neilson and Lisa Pole-Evans.
Lisa Pole-Evans and Susie Hansen who judged the special categories and to all those who did the sums afterwards!
The Department of Agriculture for their assistance before and after the event, in particular Katrina Stephenson, Sarah Bowles, Gordon Lennie and Adam Dawes.
H.E The Acting Governor, Alex Mitham, for presenting the prizes.
The Committee of the Southern Cross Social Club.



# Detector Dog Teams back in the Islands

By Naomi Baxter

This month, the Falkland Islands Government (FIG) and the Government of South Georgia and the South Sandwich Islands (GSGSSI) are welcoming back Megan Vick and Erin Jackson the biosecurity dog handlers from Working Dogs for Conservation.

Megan and Erin are returning to the Islands with one seasoned dog, Samurai, a fox-like Shiba Inu and a brand new dog in training, Pipit, an 8 month old springer spaniel. Pipit is named after the South Georgia Pipit, a species whose numbers are recovering after rats were removed from South Georgia.

Pipit's job is to make sure no rat hides out in a research, tourist or fishing vessel headed for the islands. She'll do that by inspecting the boats that stop-over in the Falkland Islands before continuing to South Georgia and the South Sandwich Islands. Her keen sense of smell allows her to search the boats more quickly and effectively than a human ever could.

Pipit didn't make it as a field trial dog, and her extremely high energy and toy drive made her unsuitable as a pet. Pete Coppolillo, Executive Director of Working Dogs for Conservation explains, "Dogs like Pipit often end up in shelters or being euthanised, because their drive and energy make them unsuitable for family life. Finding them jobs is a win-win-win: they get a second chance at life, the shelters find a suitable forever home for a difficult to place dog, and the wildlife and wild places get protected."

Pipit is still in training and is learning to cope with new and unusual situations and also to ignore distractions when she's working and it sounds like she is enjoying every minute: "Her tail goes constantly when she's working. She loves her job," says Megan.

As the detector dog programme is a joint FIG and GSGSSI project they are looking to expand the ways the dogs could be used in the Falklands, and even learn to detect new scents.

Pipit and Samurai will be checking cargoes that are travelling on the Concordia Bay to rodent-free Islands and we are investigating what other 'biosecurity risk' scents the dogs will be focussing on.

The dog teams will be in the Islands for the next 6 months so keep an eye out for them.



# Use of Gibberellic Acid on Pastures in the Falkland Islands

*By James Bryan*

This year several farms around the islands have trialled the use of a plant growth regulator on a large scale, called Gibberellic Acid (brand names: Express®, ProGibb®) throughout the spring period with good results.

## **What is Gibberellic Acid?**

Gibberellic acid is a naturally-occurring plant hormone that stimulates growth through cell expansion. In grasses this results in stem and leaf elongation. It is produced in higher quantities during warmer months and at low levels during colder months. Applying more to the plant during periods of low growth can result in more available feed on hand.

Originally meant for fruit production to help stimulate flowering and increase fruiting of plants, it has a use in the frost resistance of flowers and fruit such as citrus, as well as being used to help fruit such as tomatoes set in high temperatures. In Agriculture we use it to stimulate pasture and herb growth throughout the colder periods of the year. Initial trials conducted in the 1960's by CSIRO in Australia used very high rates (260g/ha). However, this actually depressed production in pasture and so work using Gibberellic Acids was abandoned. More recent studies in the mid-2000's showed that using low rates (<10% of the initial rates) gave significant increases in the amount of pasture produced over a limited period of time.

## **When should I use it?**

Work undertaken in the Falkland Islands by the DoA during the latter part of 2015 shows that there is definitely a response to using it here in the islands, in some cases over and above the control (which received no treatment) of up to 155%.

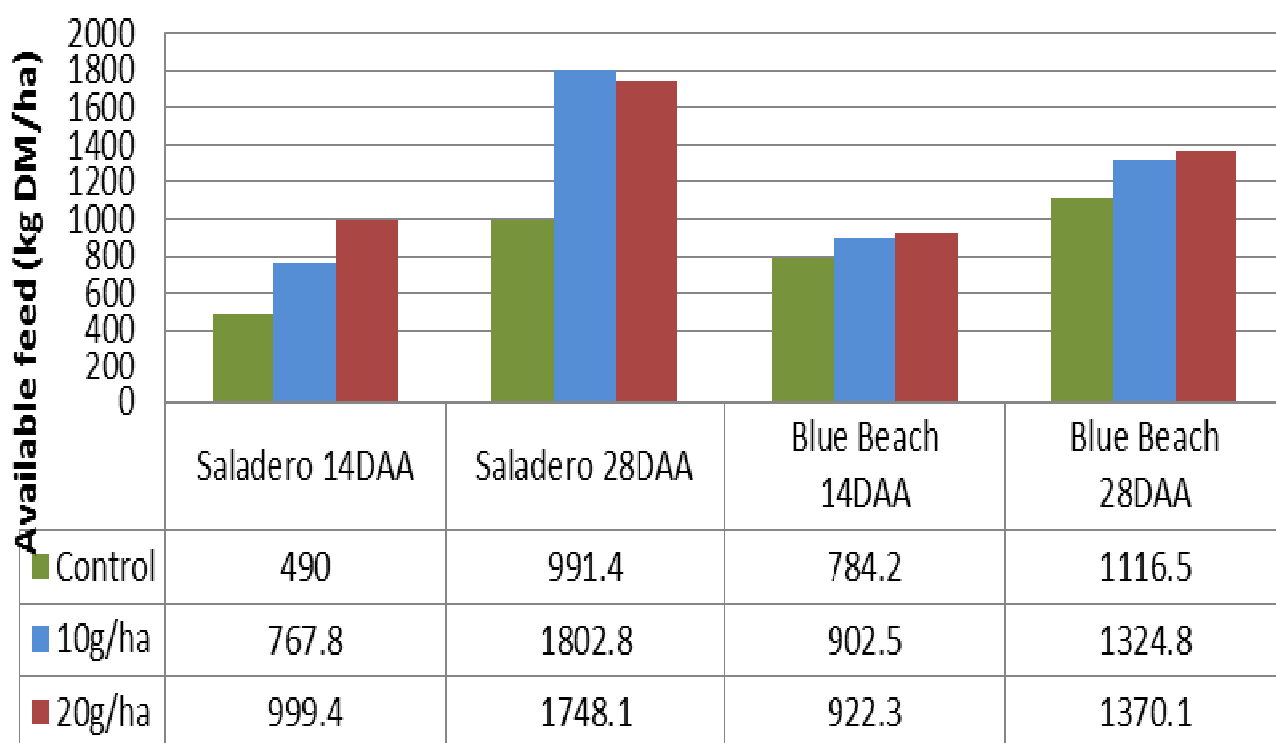
Pasture growth relies on both soil and air temperature, In warmer temperatures quicker growth takes place. This is mostly due to the amount of natural gibberellins produced within the plant. The best responses according to international literature have been found to occur when soil temp is above 7 degrees. This coincides well with ryegrass, as ryegrass generally starts to grow at about 4.5 degrees soil temp (cocksfoot is lower at about 2 degrees).

The best research has shown that Gibberellic acid can be used both going into and coming out of winter in order to boost pasture growth and hence feed supply across reseeds. So the potential exists in the Falklands to utilise this for several options. In autumn this can be used to extend the round post weaning of lambs and calves and keep them on growing pasture for longer into the winter. This will improve their growth rates, meaning they will be bigger and get off to a better start the following spring. Gibberellic acid could potentially be used to build up feed going into winter so there is more feed on offer on your reseeds throughout the winter period. Another option for use in autumn is for flushing and also during tupping time with your ewe flock, to ensure ewes are putting on weight and hence cycling better for the ram.

In spring time the idea of using Gibberellic acid is to bring forward the growth curve to enable grazing areas to be used earlier in the year, so think September instead of October for the first graze off your reseeds. Work has shown that Gibberellic Acid can be used more than once per season, however if this is the plan then Nitrogen (Urea) should be co-applied to ensure the grass has enough nutrients to support growth.



# Pasture response to ProGibb® SG 2015



One study in NZ showed that by applying Express® alone to pasture in early spring resulted in an increase of pasture growth by 29%. When using urea by itself the benefit was a 30% increase in pasture production. However, using the 2 products together resulted in a 64% increase, so a cumulative effect in production over the 4 week period.

## Recommendations for the Falklands

The use of a good quality product, such as Express or ProGibb SG, should be used along with a wetting agent such as Widespread 1000 in 100L water per hectare. Both should be applied in early spring and as it starts to cool down in the autumn. Maximise growth potential through broadcasting Urea at 100kg/ha at the same time. Pastures with high underlying fertility will have better results as the plant will respond better to the increased growth.

Pastures should be grazed prior to application and allowed to freshen up for about 5 days. It is best to graze this pasture approximately 3-4 weeks post application as this is when the applied gibberellic acid starts to wear off. Applications can be continued until soil temp reaches approximately 10 degrees Celsius or the plant starts to go reproductive. Note: plants under stress from moisture (or lack of) may have a lesser or no response.

Autumn trials are ongoing this year, however provisional recommendations are the same as above. Begin use as air and soil temps start to drop below 10 degrees, or until visible responses stop or become uneconomic.

# Saladero News

By Mandy Ford

After all the sheep work finished I got busy with rotovating and preparations for planting re-seeds. Some existing areas are being made bigger and there are also some new areas to plant. Lewis Morrison came from Goose Green to do the planting and I was rolling until the roller broke in half. We finished all but one area in December, however this was planted as soon as we went back to work in the New Year.

Growth has been very slow due to the lack of rain at the start of summer; fortunately it is starting to show now after the small amount of rain in January. The oats have made the biggest progress so far, but the swedes and turnips are still a bit slow.



SAAS delivered the new panels and crush for the cattle yards. The tractor that should have been used to unload the container had broken down and was at the other end of the farm awaiting spares to arrive from the UK. Thankfully there was a military patrol at Saladero at the time of delivery and they helped unload the container.

Lamb marking was a lot different this year. We took a small sample from the ear of each lamb to be sent away to the USA for DNA testing. This is in place of the more traditional method of mothering up, which isn't always accurate.

To the right is a photograph of the guns that are used to take a small tissue sample from the lamb's ear. The sample goes directly into a container ready to be sent away.



Below is a photograph of the containers which hold the sample.



We are not using the big VID tags any longer. Now the sheep will only have the small brass tag together with a new type of EID tag, both of which have corresponding numbers.



After lamb marking was complete I sorted out the cattle ready for joining. This year there are 2 groups of cows being put to 2 bulls. Hopefully we may have the new cattle yards up and working by the time scanning comes along.

Stupidly I decided to do dry January this year and I have regretted the idea ever since I mentioned it. I have nearly finished it now and haven't failed even after a horrendous accident at the farm. Thanks to neighbours at Goose Green and New Haven for their help.

I wish Tracy Evans a speedy recovery and hope she will be back soon.

## ANSWERS TO SMOKO BRAIN TEASERS (November / December Edition)

### Answers to quiz questions

- ♣ **364** gifts are gifted over the 12 days of Christmas
- ♣ **Anglo Saxons** started the custom of wassailing—it means good health
- ♣ Good King Wenceslas likes his pizzas **deep pan, crisp & even!**
- ♣ **Santa** brought Frosty the Snowman back to life.
- ♣ **Ebenezer** Scrooge.
- ♣ The Grinch substituted **his dog** for a reindeer.
- ♣ A **wattle** is the name of the skin that hangs from a turkeys neck.
- ♣ There are **4** ghosts in a Christmas Carol.
- ♣ **Charles Dickens** wrote a Christmas Carol.
- ♣ **Italy** is the country that has a tradition of a witch dropping gifts down the chimney.

3	5	8	9	4	6	1	7	2
7	2	9	1	8	3	6	4	5
4	6	1	5	2	7	9	8	3
5	9	3	8	1	4	2	6	7
1	7	4	6	3	2	8	5	9
2	8	6	7	9	5	3	1	4
6	3	2	4	7	1	5	9	8
9	4	5	2	6	8	7	3	1
8	1	7	3	5	9	4	2	6

# Darwin Harbour Sports Association

**Goose Green  
2nd March - 5th March 2019**

## **Programme for the Week**

**Friday 1<sup>st</sup> March 2019**

Evening: Race Course Open and Entries Taken  
Club Open

**Saturday 2<sup>nd</sup> March 2019**

From 09:30 am: Horse Racing (Senior and Junior) & Gymkhana  
Dance

**Sunday 3<sup>rd</sup> March 2019**

From 09:30 am: Horse Racing (Senior and Junior)  
Club Open

**Monday 4<sup>th</sup> March 2019**

10:00 am: AGM - GG Social Club

11:00 am: *Children's Sports*

Mechanical Bull Competition

Football & Fun Events

7.00pm: ASADO/BBQ (All Welcome)

Dance (Fancy Dress 'The Circus' Optional)

**Tuesday 5<sup>th</sup> March 2019**

10:30 am: Dog Trials

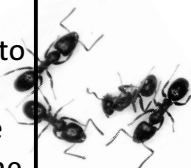
3:00 pm: Shearing – Fun Event to be held at the Race Course

9.00pm – 02:00 am: Dance

10:30 pm: Prize Giving

## **Thank you**

Many thanks to all the farms that allowed Bob and Rick from Arizona State University to hunt for ants on their land. Over 100 traps were laid all over east Falkland throughout the week and we are happy to report no ants were recorded. The samples will now be analysed in the US for any microscopic or cryptic ant species that can't be seen with the naked eye and we will let you know when we hear the results!



## **AGRICULTURAL SHOW 2019**

**Goose Green 13th April 11am**

Sheep & Cattle Competition | Agricultural Displays | Licensed Bar  
Hot Food & Soft Drinks | Locally Made Gifts & Crafts | Country Dance  
| Children's Activities | Traditional Asado

**A great day out for all the family!**

**Please email livestock entries and stall reservations by  
the 6th April to [rba.events@horizon.co.fk](mailto:rba.events@horizon.co.fk)**

## **West Falkland Sports Association**

**Port Howard**

**3rd March - 6th March 2019**

### **Programme for the Week**

**Sunday 3rd March 2019**

10 am: Foot events outside Port Howard Lodge  
2pm: Barbecue followed by Tractor Pull & Golf Challenge  
8pm: Mechanical Bull in the Club

**Monday 4th March 2019**

10 am: Shearing competition in the Port Howard shearing shed.  
2pm: Barbecue  
8pm: TBC

**Tuesday 5th March 2019**

10 am: Dog trials at the Port Howard airstrip  
Kids sports & picnic  
2pm: Barbecue & Football  
8pm: Darts competition in the Club

**Wednesday 6th March 2019**

10am: Peat Cutting at Harps Farm  
2 pm: Barbecue followed by bike agility  
8 pm: Prize giving in the Club.



# SMOKO BRAIN TEASERS

## The Come On Inn Pub Quiz

What time are all the clocks set to in the movie 'Pulp Fiction' set too?

What is the strongest muscle in the human body?

What is a group of pugs called?

What is aphonia?

Which American football player was originally cast as the Terminator, but then cancelled by the studio who were afraid that no one would believe him in the role of a remorseless killer?

In which year did the Battle of Waterloo take place?

What is the oldest inhabited city in the world?

In whose books is Miss Marple the amateur detective?

What was the middle name of Wolfgang Mozart?

## INVASIVE PLANTS

E	L	T	S	I	H	T	R	A	E	P	S	E	S	O	D	D	E	O	O
V	Y	F	S	Y	X	O	R	V	A	A	T	T	I	R	Z	E	U	R	X
T	G	M	I	B	B	T	A	N	U	T	O	A	I	G	R	E	R	A	F
S	C	I	S	E	C	S	A	F	D	F	W	F	W	S	W	W	O	N	O
T	P	W	J	H	L	N	F	M	N	Z	L	A	H	U	L	K	P	G	R
N	Q	I	E	E	N	D	X	H	L	D	D	L	K	R	Z	W	E	E	D
A	F	S	N	P	A	Y	H	C	V	J	X	A	O	R	H	A	A	H	R
R	Z	Z	V	Y	R	L	A	O	S	L	H	C	H	R	M	H	N	A	A
R	R	E	L	T	S	I	H	T	R	E	D	N	E	L	S	R	R	W	G
U	X	U	R	K	S	O	B	Q	H	S	M	C	O	M	H	A	A	K	W
C	S	X	C	F	F	H	W	U	E	T	E	Q	Y	H	A	E	G	W	O
T	C	O	U	E	R	E	H	T	A	E	H	T	Z	O	A	E	S	O	E
S	D	C	S	Y	Z	W	P	B	H	U	I	Y	A	I	J	S	O	E	T
A	U	L	E	T	A	T	K	X	G	I	C	W	P	I	K	U	R	D	H
O	L	J	V	F	I	A	B	B	J	J	S	W	H	V	L	O	T	Y	S
C	N	H	F	B	Y	X	C	N	Q	W	I	T	S	N	A	M	Q	S	G
Y	Q	N	O	B	L	Z	T	B	D	W	J	T	L	U	C	J	V	M	L
H	G	U	H	W	N	I	S	P	O	U	V	Y	O	E	Y	K	O	D	B
N	T	Y	R	Y	H	G	F	D	K	Y	K	C	B	Q	O	A	L	I	E
K	V	W	W	M	J	D	N	Q	S	Y	R	J	E	X	D	H	R	T	X

CALAFATE	FIELD HORSETAIL
SLENDER THISTLE	SPINY SOW THISTLE
HEATHER	DOCK
COAST CURRANT	MOUSE EAR HAWKWEED
OXFORD RAGWORT	ORANGE HAWKWEED
SPEAR THISTLE	EUROPEAN RAGWORT

## DID YOU KNOW???

- Chinese New Year takes place on the first New Moon of the year. This year is 'Year of the Pig', which starts on the 5th of February.
- Pigs have a better sense of smell than most dogs.
- Humans first domesticated pigs from wild boar about 9,000 years ago.

		7		4	8		2	5
6		8			9			
						1		
	6		4			5		
	5			9			3	
		4			5		6	
		5						
			6			9		1
1	3		9		7	4		

**Sudoku solution and Pub Quiz answers will be in the next issue**

**A little joke:**  
**Q:** What do you call a pig with 3 eyes?  
**A:** A piiig!

Department of Agriculture *Webpage*



Falkland Islands Government  
[www.fig.gov.fk/agriculture](http://www.fig.gov.fk/agriculture)





# COOKING CORNER— Recipes from the Ag Dept

## *Naomi's BBQ Bananas*

### You will need:

- Bananas
- Fillings for bananas (eg hot chocolate powder, chocolate buttons, marshmallows, honey, nuts etc)
- Tin Foil

### Instructions

1. Slice open the banana lengthways, but not all the way through—remember to leave the skin on.
2. Put the filling of your choice into the slit.
3. Wrap each banana individually in foil and stick them in the last embers of the bbq until their skin is black and they are soft and mushy inside.
4. Eat by scooping out with a spoon.

## *Sarah's BBQ Sauce*

- 1 tin tomatoes
- 1 diced onion
- 4 tbsp. sugar
- 4 tbsp. vinegar
- 3 tbsp. Lea & Perrins
- 2 tsp mustard powder
- Salt and pepper to taste
- Cornflour to thicken (if needed)

- ⇒ Heat the oil in a pan and fry the onions.
- ⇒ Add the tomatoes and all other ingredients then leave to simmer.
- ⇒ Thicken the sauce with cornflour if it's too thin and add more sugar if it's too sharp.

## *Home made Lemonade*

1. Make a simple syrup by heating together **1 cup of water** and **1 cup of sugar** until all the sugar has dissolved. Put to one side and allow to cool.
2. Zest **2 lemons** and keep zest to one side.
3. Squeeze **8-10 lemons** to make about 2 cups of juice.
4. Mix **3 cups of still or sparkling water** with the zest and juice, then add simple syrup to taste.

## *Rhiannon's Veggie Skewers*

- Block of Haloumi cheese
- Fresh cherry tomatoes
- Fresh pepper
- 1 onion
- 1 courgette
- Thick bread (homemade is best)
- Oil to coat veggies (flavoured if you want)
- Pack of skewers

- If you have wooden skewers pre-soak them in a bowl of water to help prevent them charring while cooking.
- Chop up all the ingredients into thick chunks (big enough to fit on the skewer without breaking but small enough to cook through without going mushy!).
- Toss all vegetable ingredients in the oil to coat.
- Load up your skewers, alternating between the different ingredients.
- Cook over a barbecue or under a grill, turning regularly.

Note: these ingredients are just a suggestion - you can use anything you like!

## *Quick Roast Garlic Dip*

- Head of Garlic
- Olive Oil
- Mayonnaise
- Foil

- Remove the loose outer papery skins from the garlic head.
- Thinly slice the top off the head of garlic so all of the clove inners are visible
- Place on foil and drizzle with oil (you can put more than one head on the same sheet of foil)
- Fold up foil around the garlic head(s)
- Roast for about 45 mins or possibly longer on med heat until the cloves are soft.
- Squeeze the squashy garlic out and mix however much you like with mayonnaise.

Note: You can spread the roast garlic directly on to bread... it is delicious and will keep vampires away FOREVER!!!



Department of Agriculture

# National Stud Flock Ram Sale

## Sat 16th March 2019

### Stock for Sale:

- \* *Ex Elite Rams*
- \* *Sale Shearling Rams*
- \* *Flock Shearling Rams*
- \* *Flock Ewes*

*Stock inspection  
commences at 9am*

*Helmsman auction  
commences at  
11:30am*



Ferry departs Port Howard at 8am, return ferry is loading at 5:30pm for 6pm sailing from New Haven - you will need to book your place through Workboat Services.

**Please note: if the ferry is cancelled due to bad weather the sale will be postponed, date to be confirmed.**

If you require transport to and from New Haven, please advise the DoA well in advance. Also ensure you have transport organised for any stock you may purchase.



*More details to be released closer to the date.*

*There will be food and drinks available throughout the day.*