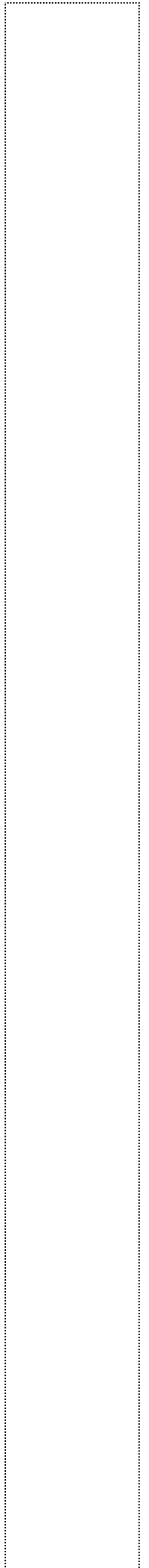


Department of Agriculture

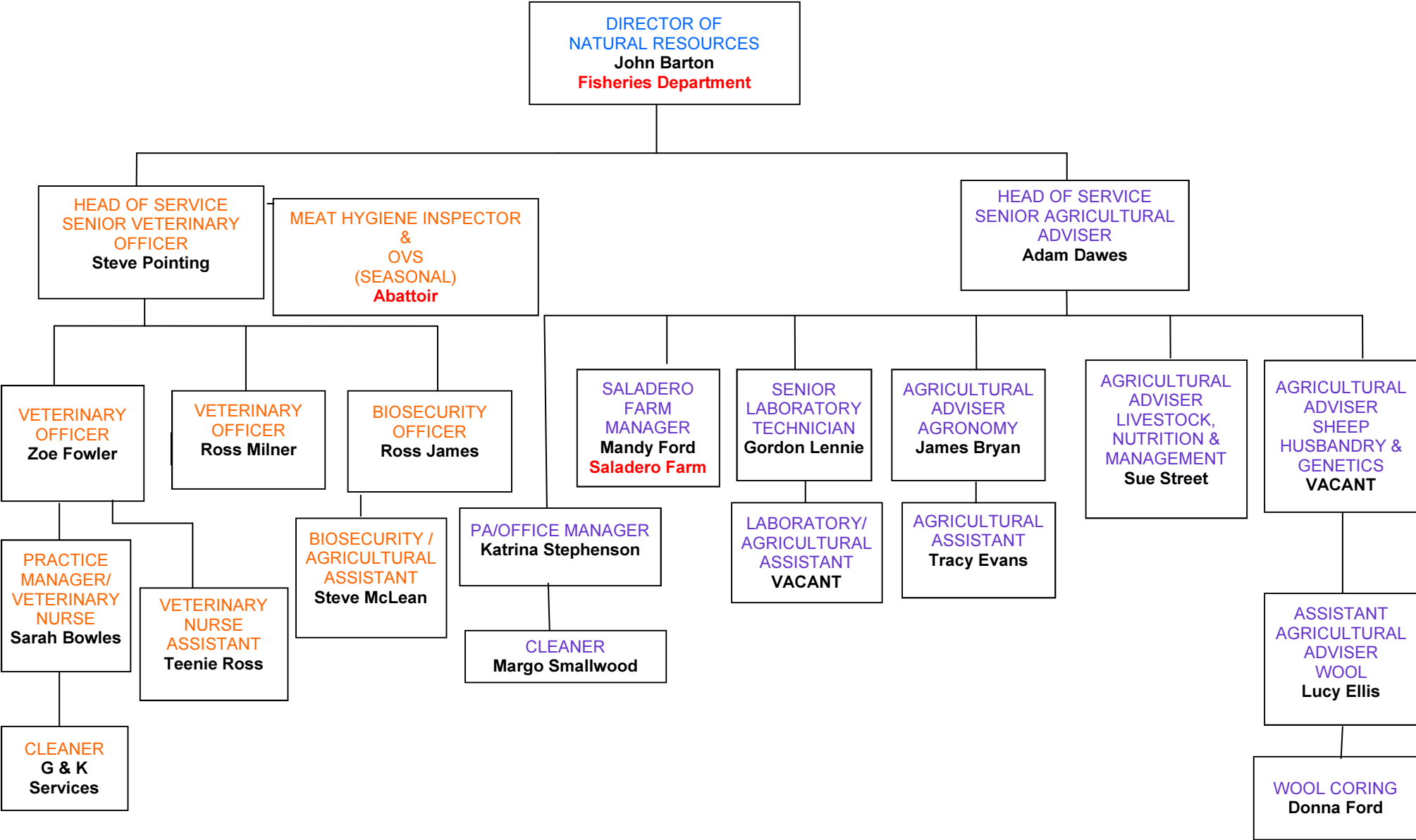
Farm Management Handbook

General Section

(Colour code: White)



DEPARTMENT OF AGRICULTURE ORGANISATIONAL CHART



DEPARTMENT OF AGRICULTURE STAFF CONTACT INFORMATION

DoA telephone number: 27355

Fax: 27352

Veterinary telephone number: 27366

On call numbers:

Vets: 55366

Biosecurity: 55535

John Barton can be contacted on

Fisheries number 27260

| Name | Title | E-mail |
|----------------------------------|---|--------------------------|
| John Barton | Director of Natural Resources | jbarton@fisheries.gov.fk |
| Department of Agriculture | | |
| Adam Dawes | Senior Agricultural Advisor | adawes@doa.gov.fk |
| Katrina Stephenson | PA / Officer Manager | kstephenson@doa.gov.fk |
| James Bryan | Agricultural Advisor (Agronomy) | jbryan@doa.gov.fk |
| Sue Street | Agricultural Advisor (Livestock Nutrition & Management) | sstreet@doa.gov.fk |
| Lucy Ellis | Assistant Agricultural Advisor | lellis@doa.gov.fk |
| Mandy Ford | Farm Manager, Saladero | saladero@cwimail.fk |
| Gordon Lennie | Senior Laboratory Technician | glennie@doa.gov.fk |
| Tracy Evans | Agricultural Assistant | tevens@doa.gov.fk |
| Donna Ford | Wool Coring Officer | woolcoring@doa.gov.fk |
| Veterinary Service | | |
| Steve Pointing | Senior Veterinary Officer | spointing@doa.gov.fk |
| Zoe Fowler | Veterinary Officer | zfowler@doa.gov.fk |
| Ross Milner | Veterinary Officer | rmilner@doa.gov.fk |
| Sarah Bowles | Practice Manager | sbowles@doa.gov.fk |
| Teenie Ross | Veterinary Nurse Assistant | tross@doa.gov.fk |
| Ross James | Biosecurity Officer | biosecurity@doa.gov.fk |
| Stephen McLean | Biosecurity / Agricultural Assistant | biosecurity2@doa.gov.fk |



Farm Note

Department of Agriculture
Falkland Islands

No. 900

LABOUR SCHEME

1. Qualifications : farm business turnover exceeding £10,000 or stock numbers exceeding 2000 Dry Sheep Equivalents (DSE).
2. This scheme is to be used for the following camp related works only:
 - a. Fencing including FIG supplied replacement fencing
 - b. Pasture Improvement (not for work undertaken on FIP)
 - c. Major Building/ Development Projects
 - d. Maintenance of farm buildings, yards, dog cages etc.
 - e. Employment of agricultural trainees

Note: Outstanding "replacement fencing" is viewed as the highest priority for Labour Scheme funding. On any individual farm, no other project will be funded until all replacement fencing has been erected on that particular farm.

3. Approval for any work to be undertaken must be received from the Department of Agriculture, before the work commences or person(s) employed. In each financial year, farms will be able to retrospectively claim for works commencing after 1st July (each year), providing they meet approval criteria.
4. The host farmer should, when practical, work alongside the person(s) being employed on their farm.
5. There is no stated limit for camp residents on the amount an individual can earn on the scheme. The Senior Agricultural Adviser will use his discretion to ensure that fairness prevails.
6. Farmers and spouses/partners cannot work on the family farm or farms that they manage.
7. Labour Scheme support will, until further notice, be capped at a ceiling of £1,500 per farm.
8. In circumstances where no camp residents are available, Stanley residents will be permitted to work on the Labour Scheme.
9. The Department will consider payment for a maximum of 10 hours per day in summer (October to April inclusive) and eight hours per day in winter (May to September inclusive) for outside work. Travel to and from the work site cannot be claimed.
10. The rate of pay is £6.00 per hour or £5.00 for a Trainee.
11. Applications need to contain the following information: (Application forms available from DoA, attention Katrina Stephenson).
 - 1) Name of persons to be employed
 - 2) Description of work to be carried out (i.e. name of camps where fencing work will take place).
 - 3) Estimate of number of hours required to complete the work.

PLEASE CONTACT THE SENIOR AGRICULTURAL ADVISOR FOR FURTHER DETAILS. APPLICATIONS SHOULD BE SENT TO THE SENIOR AGRICULTURAL ADVISOR FOR CONSIDERATION AND APPROVAL.

The information contained in this publication is provided as general advice only. For application to specific circumstances, professional advice should be sought. The Department of Agriculture has taken all reasonable steps to ensure that the information in this publication is accurate at the time of publication. Readers should ensure that they make appropriate inquiries to determine whether new information is available on the particular subject matter.

© Falkland Islands Government, Department of Agriculture, PO Box 583, Stanley, Falkland Islands FIQQ1ZZ Tel (+500) 27355

CAMP MEDICINE CHEST CONTENTS

Below is a list of what should be in your medicine chest. Items should only be taken and used from the chests on the advice of a Doctor/Dentist, they are not intended for people to dip into and self medicate. The hospital also advises that a note is made of who had what and which Doctor/Dentist authorised each issue from the chest so that is the replacement item doesn't appear they can trace back.

Analgesics

| | |
|---|--|
| Aspirin dispersible tablets 300mg | 1 x 100 tablets |
| Buprenorphine s/l tablets 200 micrograms | 1 x 10 tablets – these are a controlled drug and need to be kept in a locked container |
| Dihydrocodeine tablets 30mg | 1 x 28/30 tablets (depends upon the pack size from suppliers) |
| Ibuprofen tablets 200mg | 1 x 84 tablets |
| Paracetamol Paediatric suspension 120mg/5ml | 1 x 100ml bottle |
| Paracetamol suppositories 120mg | 1 x 2 suppositories |

Antibiotics

| | |
|--|------------------|
| Amoxicillin capsules 250mg | 2 x 21 capsules |
| Amoxicillin oral suspension 125mg/5ml | 1 x 100ml bottle |
| Cefalexin capsules 250mg | 1 x 28 capsules |
| Erythromycin Paediatric suspension 125mg/5ml | 1 x 100ml bottle |
| Erythromycin capsules 250mg | 1 x 28 capsules |
| Metronidazole tablets 200mg | 1 x 21 tablets |

Asthma/Allergy/Chest

| | |
|--|------------------|
| Chlorpheniramine tablets 4mg | 1 x 30 tablets |
| Chlorpheniramine syrup 2mg/5ml | 1 x 150ml bottle |
| Pholcodeine sugar free linctus 5mg/5ml | 1 x 300ml bottle |
| Prednisolone e/c tablets 5mg | 1 x 30 tablets |
| Salbutamol inhaler 100 micrograms/puff | 1 inhaler |
| Salbutamol sugar free syrup 2mg/5ml | 1 x 150ml bottle |

Cardiac

| | |
|--|---------|
| Glyceryl trinitrate spray 400micrograms/puff | 1 spray |
|--|---------|

Gastro-Intestinal

| | |
|-------------------------------------|----------------|
| Gaviscon tablets | 1 x 20 tablets |
| Prochlorperazine buccal tablets 3mg | 1 x 10 tablets |

Neurological

| | |
|---------------------------|----------------|
| Diazepam rectal tube 10mg | 1 rectal tube |
| Diazepam tablets 2mg | 1 x 28 tablets |

Topical

| | |
|---------------------------------|------------------|
| Chloramphenicol eye ointment 1% | 1 x 4 gram tube |
| Clotrimazole cream 1% | 1 x 20 gram tube |
| Clotrimazole pessary 500mg | 1 pessary |
| Condoms | 10 condoms |



Farm Note

Department of Agriculture
Falkland Islands
Prepared - August 2010

WORKSHOP & TRAINING OPPORTUNITIES

This section of the Farm Management Handbook aims to give advice as to what training and workshops are available. If you identify any training area or workshops not covered in this section which you believe you may benefit from, please contact the Department of Agriculture in the first instance.

Workshop and adult training opportunities

Short courses relevant to agriculture are run routinely and can also be offered on request and there is a wide skill base to choose from:

Agriculture

- Wool
 - clip preparation
 - wool handling
 - Quality Falkland Wool
- Livestock
 - assessment of sheep and cattle
 - animal/livestock management
- Agronomy
 - grazing management
 - cropping
- Business skills
 - gross margin
 - benchmarking/cost of production

The Veterinary Section is able to deliver training on a number of areas when requested:

- Livestock transport for hauliers
- Slaughter certificates for abattoir staff
- Basic animal husbandry practices for farmers to do themselves
- Animal health programmes

Specialist training

Periodically the Department of Agriculture brings in overseas specialists. These training opportunities are generally offered to all farmers and other interested persons and such courses will be advertised.

Training for young adults

Trainee Scheme (on the Labour Scheme)

The DoA can provide support for farmers to employ young people interested in agriculture as a career. The support is in the form of a grant to cover the wages cost (£5 per hour) of the trainees.

The overall aim of the scheme is to provide the trainees with on-the-job training so they can gain the full experience of working and living on a farm. This will require the trainee to be provided with accommodation and meals.

Upon joining the scheme the trainee will work on-farm and learn hands on farming skills for up to three months. The skills they will learn will depend on the farm that they work on. Basic farming skills can include: stock work; fencing; general farm maintenance; mechanics; record-keeping (stock and business); doing various jobs in the shearing shed; welding; carpentry; and much more.

One of the key benefits of the scheme is for the trainee to develop skills in these different areas and funding will be granted on this basis.

Anyone who is interested in agriculture as a career from school leaver age up to thirty years old is eligible to join the scheme. You can speak to any of the DoA staff for more information on 27355 or email kstephenson@doa.gov.fk for an application form. Trainee scheme funding comes out of the farm labour scheme allocation.

If you are a farmer interested in being a trainer/mentor or a young person interested in being a trainee please contact the DoA for an application form or contact Neil Judd.

Shearing Trainees

The Department recognises the need for young people to learn this valuable skill. To assist novice shearers, this scheme allows for the provision of shearing equipment for up to two months whilst the trainees are building up their skills.

Although trainees will need to speak to a shearer contractor about employment, the Department are willing to provide advice and assistance where possible.

Work Experience

If you are interested in a career in agriculture and would like to gain some hands-on (unpaid) work experience, then you might be able to join the DoA team for a short period. Please contact us on 27355 for more information.

BASIC TABLES & CONVERSIONS AREA

Metric

| | |
|--------------------------------------|------------------------|
| Hectare (ha) | = 10,000 square metres |
| Square centimetre (cm ²) | = 0.0001 square metre |
| 1 sq centimetre | = 0.16 sq in |
| 1 sq metre | = 1.20 sq yd |
| 1 sq metre | = 10.8 sq ft |
| 1 hectare | = 2.47 ac |

British

| | |
|-------------------|------------------------------------|
| 1 sq inch (sq in) | = 6.45 cm ² |
| 1 sq foot (sq ft) | = 144 sq inches |
| 1 sq yard (sq yd) | = 9 sq feet |
| 1 acre (ac) | = 4,840 sq yards |
| 1 sq foot | = 0.093 m ² |
| 1 sq yard | = 0.836 m ² |
| 1 acre | = 4,047 m ² or 0.405 ha |

Conversion Factors

| | |
|----------------------------|----------|
| Sq metres to sq foot | x 10.8 |
| Sq metres to sq yards | x 1.20 |
| Hectares to acres | x 2.47 |
| Sq feet to m ² | x 0.0929 |
| Sq yards to m ² | x 0.836 |
| Acres to hectares | x 0.405 |

LENGTH

Metric

| | |
|-----------------|----------------|
| Kilometre (km) | = 1,000 metres |
| Centimetre (cm) | = 0.01 metre |
| Millimetre (mm) | = 0.001 metre |
| 1 millimetre | = 0.0394 in |
| 1 centimetre | = 0.394 in |
| 1 metre | = 1.09 yd |
| 1 kilometre | = 0.621 miles |

British

| | |
|-------------|----------------------|
| 1 inch (in) | = 2.54 cm or 25.4 mm |
| 1 foot (ft) | = 12 inches |
| 1 yard (yd) | = 3 feet |
| 1 mile | = 1,760 yards |
| 1 foot | = 0.30 m |

| | |
|--------|-----------|
| 1 yard | = 0.91 m |
| 1 mile | = 1.61 km |

Conversion factors

| | |
|-----------------------|----------|
| Centimetres to inches | x 0.394 |
| Millimetres to inches | x 0.0394 |
| Metres to foot | x 3.29 |
| Metres to yard | x 1.09 |
| Kilometres to miles | x 0.621 |
| Inches to cm or mm | x 2.54 |
| Feet to metres | x 0.305 |
| Yards to metres | x 0.914 |
| Miles to kilometres | x 1.61 |

VOLUME & CAPACITY

Metric

| | |
|-------------------------------|--|
| Cubic metre (m ³) | = 1 kilolitre = 1,000 litres |
| Millilitre (ml) | = 1 cubic centimetre (cc) or 0.001 litre |
| 100 millilitres | = 0.176 pint |
| 1 litre | = 1.76 pints |
| 1 kilolitre | = 220 gallons |

British

| | |
|-----------------------|----------------|
| 1 pint | = 20 fl oz |
| 1 gallon | = 8 pints |
| 1 fluid ounce (fl oz) | = 28.4 ml |
| 1 pint | = 0.568 litres |
| 1 gallon | = 4.55 litres |

Conversion Factors

| | |
|-------------------|---------|
| Litres to pints | x 1.76 |
| Litres to gallons | x 0.220 |
| Pints to litres | x 0.568 |
| Gallons to litres | x 4.55 |

Temperature

| | |
|--|------------------------|
| (°C) degree Centigrade (also known as Celsius) | (°F) degree Fahrenheit |
| Freezing point = 0°C | Freezing point = 32°F |
| Boiling point = 100°C | Boiling point = 212°F |

Conversion

| | |
|----------------------|----------------------|
| (°C x 1.8) + 32 = °F | (°F - 32) ÷ 1.8 = °C |
|----------------------|----------------------|

WEIGHT

Metric

| | |
|----------------------|-----------------------|
| Metric tonne (tonne) | = 1,000 kilograms |
| Gram (g) | = 0.001 kilogram |
| Milligram (mg) | = 0.001 gram |
| 1 gram | = 0.035 oz |
| 100 grams | = 3.53 oz |
| 1 kilogram | = 2.20 lb |
| 1 tonne | 2,204 lb or 0.984 ton |

British

| | |
|-----------------------|---------------------------|
| 1 ounce (oz) | = 28.3 g |
| 1 pound (lb) | = 16 ounces |
| 1 hundredweight (cwt) | = 112 pounds |
| 1 ton | = 20 hundredweights |
| 1 pound | = 454 g or 0.454 kg |
| 1 hundredweight | = 50.8 kg |
| 1 ton | = 1,016 kg or 1.016 tonne |

Conversion Factors

| | |
|-----------------------------|-----------|
| Grams to ounces | x 0.0353 |
| Grams to pounds | x 0.00220 |
| Kilograms to pounds | x 2.20 |
| Kilograms to hundredweights | x 0.0197 |
| Tonnes to tons | x 0.984 |
| Ounces to grams | x 28.3 |
| Pounds to grams | x 454 |
| Pounds to kilograms | x 0.454 |
| Hundredweights to kilograms | x 50.8 |
| Hundredweights to tonnes | x 0.0508 |
| Tons to kilograms | x 1,016 |
| Tons to tonnes | x 1.016 |

BASIC TABLES & CONVERSIONS LENGTH

Metric

| | |
|-----------------|----------------|
| Kilometre (km) | = 1,000 metres |
| Centimetre (cm) | = 0.01 metre |
| Millimetre (mm) | = 0.001 metre |
| 1 millimetre | = 0.0394 in |
| 1 centimetre | = 0.394 in |
| 1 metre | = 1.09 yd |
| 1 kilometre | = 0.621 miles |

British

| | |
|-------------|----------------------|
| 1 inch (in) | = 2.54 cm or 25.4 mm |
| 1 foot (ft) | = 12 inches |
| 1 yard (yd) | = 3 feet |
| 1 mile | = 1,760 yards |
| 1 foot | = 0.30 m |
| 1 yard | = 0.91 m |
| 1 mile | = 1.61 km |

Conversion factors

| | |
|-----------------------|----------|
| Centimetres to inches | x 0.394 |
| Millimetres to inches | x 0.0394 |
| Metres to foot | x 3.29 |
| Metres to yard | x 1.09 |
| Kilometres to miles | x 0.621 |
| Inches to cm or mm | x 2.54 |
| Feet to metres | x 0.305 |
| Yards to metres | x 0.914 |
| Miles to kilometres | x 1.61 |

BASIC TABLES & CONVERSIONS VOLUME & CAPACITY

Metric

| | |
|-------------------------------|--|
| Cubic metre (m ³) | = 1 kilolitre = 1,000 litres |
| Millilitre (ml) | = 1 cubic centimetre (cc) or 0.001 litre |
| 100 millilitres | = 0.176 pint |
| 1 litre | = 1.76 pints |
| 1 kilolitre | = 220 gallons |

British

| | |
|-----------------------|----------------|
| 1 pint | = 20 fl oz |
| 1 gallon | = 8 pints |
| 1 fluid ounce (fl oz) | = 28.4 ml |
| 1 pint | = 0.568 litres |
| 1 gallon | = 4.55 litres |

Conversion Factors

| | |
|-------------------|---------|
| Litres to pints | x 1.76 |
| Litres to gallons | x 0.220 |
| Pints to litres | x 0.568 |
| Gallons to litres | x 4.55 |

Temperature

| | |
|--|------------------------|
| (°C) degree Centigrade (also known as Celsius) | (°F) degree Fahrenheit |
| Freezing point = 0 °C | Freezing point = 32 °F |
| Boiling point = 100 °C | Boiling point = 212 °F |

Conversion

| | |
|---|---|
| $(^{\circ}\text{C} \times 1.8) + 32 = ^{\circ}\text{F}$ | $(^{\circ}\text{F} - 32) \div 1.8 = ^{\circ}\text{C}$ |
|---|---|

BASIC TABLES & CONVERSIONS WEIGHT

Metric

| | |
|----------------------|-----------------------|
| Metric tonne (tonne) | = 1,000 kilograms |
| Gram (g) | = 0.001 kilogram |
| Milligram (mg) | = 0.001 gram |
| 1 gram | = 0.035 oz |
| 100 grams | = 3.53 oz |
| 1 kilogram | = 2.20 lb |
| 1 tonne | 2,204 lb or 0.984 ton |

British

| | |
|-----------------------|---------------------------|
| 1 ounce (oz) | = 28.3 g |
| 1 pound (lb) | = 16 ounces |
| 1 hundredweight (cwt) | = 112 pounds |
| 1 ton | = 20 hundredweights |
| 1 pound | = 454 g or 0.454 kg |
| 1 hundredweight | = 50.8 kg |
| 1 ton | = 1,016 kg or 1.016 tonne |

Conversion Factors

| | |
|-----------------------------|-----------|
| Grams to ounces | x 0.0353 |
| Grams to pounds | x 0.00220 |
| Kilograms to pounds | x 2.20 |
| Kilograms to hundredweights | x 0.0197 |
| Tonnes to tons | x 0.984 |
| Ounces to grams | x 28.3 |
| Pounds to grams | x 454 |
| Pounds to kilograms | x 0.454 |
| Hundredweights to kilograms | x 50.8 |
| Hundredweights to tonnes | x 0.0508 |
| Tons to kilograms | x 1,016 |
| Tons to tonnes | x 1.016 |